

# Wild and Woodsy in Washington

April 25-28, 2024

Come and Walk on the Wild Side



**Welcome** to the Wild and Woodsy in Washington web pages. In these pages we will endeavor to provide up-to-date information on the event. The walk committee will provide updates as they become available.

Included in these pages you will find information such as times, dates, locations, walk descriptions, and ratings. If you live in the Pacific Northwest you are familiar with the climate and topography. However, for benefit of those who are visiting for the first time we will try to give some guidance on what to expect.

## Walk Central

---

Washington Association of Sheriffs and Police Chiefs  
3060 Willamette Dr. NE  
Suite 200  
Lacey, WA 98516

## **Accommodations**

---

Our event includes walks that are scattered over a wide area. The official start point is located on the eastern edge of the city of Lacey. There are many hotels and other accommodations such as Air B&B and VRBO in the Lacey, Olympia, Tumwater, and DuPont areas. There are accommodations for all budgets and tastes.

## **Transportation**

---

It's important to note that you will need to provide your own transportation. Some of our walks are as much as 50 miles from the start point. Even our "in town" walks are not convenient to public transportation. It may be possible to arrange carpools; however, this will be your responsibility.

## **Weather**

---

For those who are visiting our area, we will try to give you an idea of what to expect. Spring is, of course, a time of changeable, unstable weather conditions. The Pacific Northwest is famous for its rain. The month of April can be quite wet, although the rain is often interspersed with periods of glorious sunshine. Nights will be cold, maybe even frosty, and days will be cool. When packing, be prepared for almost for anything. On the positive side, this can be a very colorful time of year, as the Rhododendrons and other plants are starting to bloom.

## **Trail Conditions**

---

Most of our walks involve at least some trails. These trails are well maintained; however, in the early spring some can be slightly more challenging. Be prepared for mud (see above) and possible standing water on some trails. Bring good hiking boots/shoes and a walking stick.

Be aware that some of our walks/hikes are in the foothills of the Olympic Mountains. In April the weather and trail conditions can change rapidly.

## **Trailhead Parking, Etc.**

---

Ample free parking is available at most of our event walks. There are, however, a few notable exceptions. Please note that parking passes for these exceptions are not available at the walk start. Information on temporary passes is available at:

National Parks Pass <https://www.nps.gov/planyourvisit/passes.htm>

Washington State Discover Pass <https://www.discoverpass.wa.gov>

The **Big Creek Hike** is in the Olympic National Forest. Since the trailhead parking lot is closed in April, parking will be on Forest Service Road 24 just outside the campground; and no pass is required.

Both the **Mima Falls Hike** and **Millersylvania Walk** are on State of Washington managed lands. A Washington State Discover Pass is required for parking.

## Event Schedule

---

### **Walk Central (Registration, Information, Sales, etc.):**

Washington Association of Sheriffs & Police Chiefs  
3060 Willamette Dr. N Suite 20 Lacey, WA 98516

Hours:

Thursday, April 25 – Noon – 5 PM

Friday, April 26 – 8 AM - 5 PM

Saturday, April 27 - 8 AM - 5 PM

Sunday, April 28 - 8AM - Noon

### **Thursday, April 25, Pub Crawl Group Walk**

Place to meet: Bayview Thriftway, 516 4<sup>th</sup> Ave. W., Olympia

Time: 4:00 (be ready to start walking at 4 pm)

### **Friday, April 26, Meet & Greet:**

The River's Edge Restaurant, 4611 Tumwater Valley Dr. SE, Tumwater, WA 98501

Snacks and no host full bar.

Open from 6 PM until 10 PM

The Friday night Meet and Greet reservations must be mailed by **March 31, 2023**.

### **Saturday, April 27, Procession of the Species**

Place: Downtown Olympia between Cherry St. SE & Legion Way E ending at Heritage Park.

Time: Starts at 4:30 PM

This is a colorful, quirky parade celebrating the species of our natural world, wild, woody, and otherwise.

### **Saturday, April 27, Event Dinner Buffet:**

The River's Edge Restaurant, 4611 Tumwater Valley Dr. SE, Tumwater, WA 98501

Choice of four entrees and no host full bar.

Doors open at 6 PM. Dinner is served at 7 PM.

Please note: Saturday night dinner reservations are limited to the FIRST 120 people to register and send payment. For the menu, see registration form. Registration form must be mailed by **March 31, 2023**. All sales must be in US funds and are non-refundable.

\*You may bring your own bottle of wine however a \$10.00 uncorking fee will be charged.

### **Sunday, April 28, NW Trek Wildlife Park Group Walk**

Distance: 5K, Rated: 2A; Medium for wheelchairs and strollers, no pets.

Distance: 5K or 10K - Rated 2C; not suitable for wheelchairs and strollers, no pets.

Walk through the Northwest Trek Wildlife Park on trails and view the amazing animals.

Hours: 9:30 AM - 4 PM. Regular entrance fee prices apply except for the pre-registered group walk.

NW Trek Wildlife Park Group Walk with special pricing is on Sunday April 28 only.

You must submit your Pre-Registration by March 31, 2024 to get the discounted group entry price of \$15.00 for adults and \$11.00 for seniors (65+). Credit walkers will pay an additional \$3.00 for IVV credit. The pre-registration form will have the negotiated group price.

## 11 Walks/Hikes

All of our event walks/hikes and YREs will be offered on the Online Start Box.

The Online Start Box is open April 22- May 3. If you register for a walk/hike with the Online Start Box, you **DO NOT** register at the physical start point at Walk Central.

### **NW Trek Wildlife Park Event**

Address: 11610 Trek Dr., E., Eatonville, WA 98328

SN: 126642 – Y3504

Distance: 5K, Rated - 2A; Medium for wheelchairs and strollers, no pets.

Distance: 5K or 10K - Rated 2C; Not suitable for wheelchairs and strollers, no pets.

Walk through the Northwest Trek Wildlife Park on trails and view the amazing wildlife up close.

Hours: 9:30 AM - 4 PM. Pay the regular NW Trek entrance fee (with the exception of the pre-registered Sunday, April 28 group walk). There will be the normal OSB charge or \$3.00 IVV credit charge at Walk Central.

### **Sunday, April 28 ONLY Group Walk**

**On Sunday, April 28, we are negotiating a special group price. If you wish to take advantage of this, you must submit your Pre-Registration by March 31, 2024 to get the discounted group entry price of \$15.00 for adults and \$11.00 for seniors (65+). Credit walkers will pay an additional \$3.00 for IVV credit.**

**Hours 9:30 AM – 4:00 PM.**



## Pub Crawl

SN: 126039 - Y3460

Distance: 5K, 10K - Rated 1A.

The route is available between April 22nd to May 3rd and available in the OSB. The PSB will be located at Walk Central. This is a friendly stroll through downtown Olympia and the surrounding area. A great time to kick back, enjoy your walk, and relax along the way at local pubs.

### Thursday, April 25 ONLY Group Walk

There will be a group walk of this route on Thursday, April 25 at 4:00 pm. The group walk will start at the Bayview Thriftway, 516 4<sup>th</sup> Ave. W., Olympia. (You may need to find street parking nearby). Be ready to walk at 4:00 pm.



## Tumwater Valley

SN: 126042 - Y3461

Distance: 5K, 10K - Rated 1A; Not suitable for wheelchairs and hard for strollers.

This walk goes through Tumwater Falls Park and surrounding neighborhoods. This route includes the Wild and Woodsy restaurant, Rivers Edge. It would be a great route to finish a day of walking and end up at the Meet & Greet or the Saturday night dinner venue.



## Big Creek Hike

SN: 125234 - Y3374

Distance: 7K - Rated 2C, 10K - Rated 3C; Not suitable for wheelchairs or strollers.

Big Creek: The Big Creek trail follows a winding route around the Big Creek drainage and up the lower slopes of Mount Elinor with an elevation gain of 900 ft for the 7K route or 1700 ft for the 10K route. The forested trail crosses cascading streams on sturdy bridges under the canopy of the Olympic National Forest.

For parking see above in "Trailhead Parking".



## Mima Falls Hike

SN: 125280 - Y3406

Distance: 7K, 10K - Rated 2C; Not suitable for wheelchairs or strollers.

Mima Falls: The Mima Falls Hike is located in the Capitol State Forest which is a beautiful recreation destination just a short drive from Olympia. This trail takes you through some lush forest and past verdant wet-lands to Mima Falls which are best viewed in spring when the creek is rushing over the small but lovely waterfall.

[Washington State Discover Pass](#) required for parking.





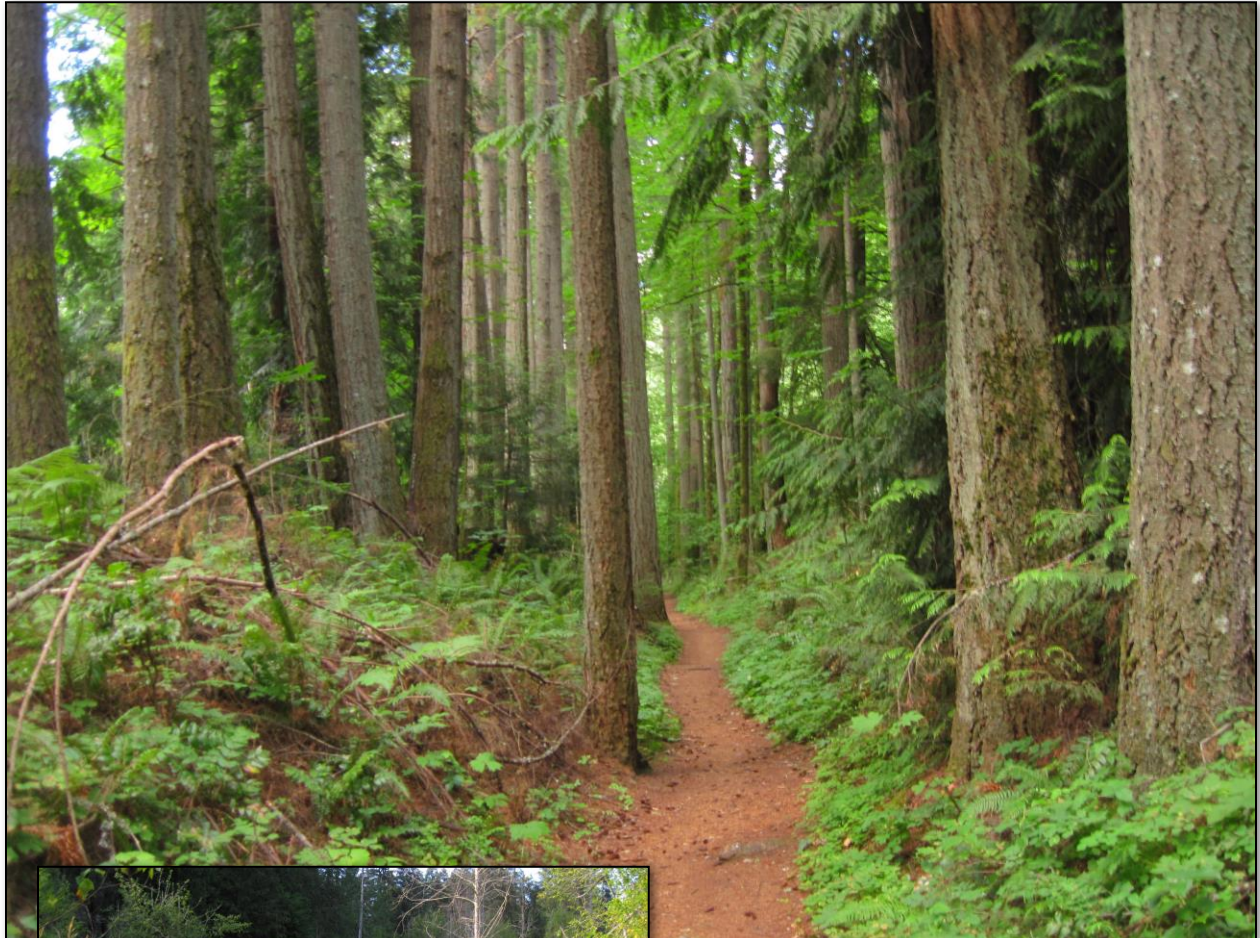
## Millersylvania State Park

SN: 125213 - Y3392

Distance: 5K, 10K, - Rated 1C

Walk through the forest and campground of Millersylvania State Park through wetlands and old-growth forest on trails, gravel roads, and boardwalks.

*A Washington State Discover Pass is required for parking.*

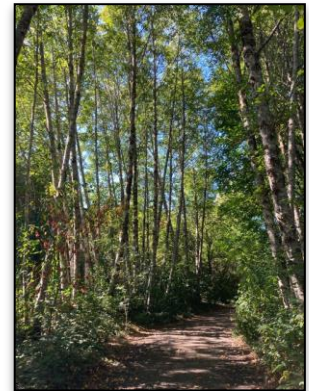
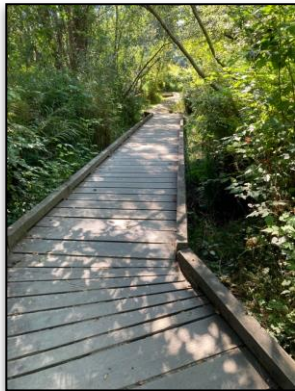


## Five Friendly Parks

SN: 125118 - Y3387

Distance: 5K, 11K - Rated 1B; Not suitable for wheelchairs or strollers.

Starts at Friendly Grove Park and goes through shaded neighborhoods and gardens through a total of five Olympia Parks.



## Here a Park, There a Park

SN: 125212 - Y3391

Distance: 6K, 11K - Rated 1B; Medium for wheelchairs and strollers.

Starts at Rainier Vista Park and goes to Wonderwood Park. Walk through peaceful neighborhoods and through two other Lacey Parks.



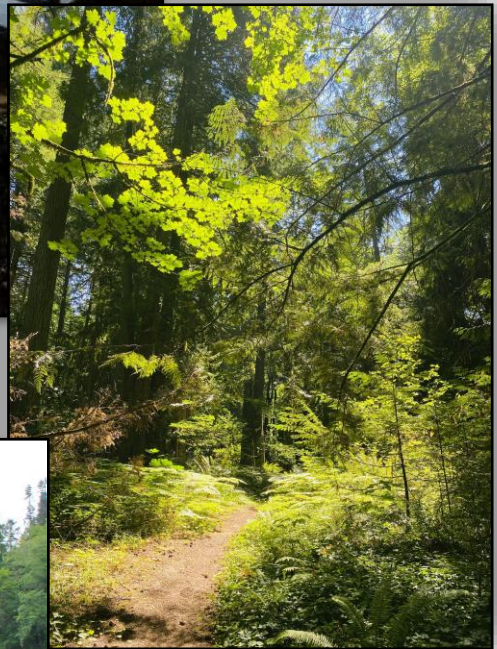
## Squaxin Park

SN: 125233 - Y3393

Distance: 5K - Rated 1B, 10K - Rated 3B

Not suitable for wheelchairs or strollers.

Walk in the woods and ferns of Priest Point Park. Views of Budd Inlet and the Capitol Building. Two 5K loops, one is fairly level, the other has several steep hills and steps.



## Hawks Prairie Neighborhood Walk

SN: 124375 - Y3333

Distance: 5K - Rated 1A, 5K or 10K - Rated 1C

5K - 1A route suitable for wheelchairs and strollers.

Tour the Hawks Prairie area from the event start point through impressive neighborhoods, woods, and golf courses.



## Westside Nature Trails

SN: 126026 - Y3459

Distance: 5K, 10K - Rated 2B

Walk through Grass Lake Nature Reserve, on the Ralph Munro Trail, and on the McLane School Forest Trail. This is a particularly colorful walk if the daffodils are in bloom.



## YREs

---

For those who just can't get enough, Capitol Volkssport Club sponsors many YREs in the area. These walks include rail trails, neighborhoods, and small towns in the area. More information will be available at the walk start, in the Northwest Pathfinder, and on-line. Most of these walks are included on the OSB.

In addition to our club sponsored walks, there are nearby walks sponsored by other clubs as well.

